

Soon may the Wellerman come

19th c. New Zealand

anon. arr. Sheena Phillips

Brisk ♩ = 88

Verse 1



mf There once was a ship that put to sea, The name of the ship was the

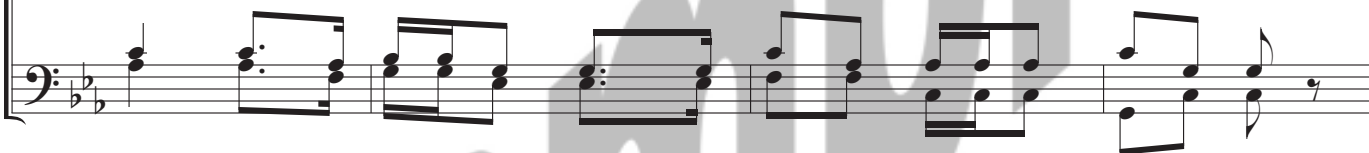


Bil-ly of Tea. The winds blew up, her bow dipped down, O blow, my bul-ly boys, blow.

Chorus



f Soon may the Wel-ler-man come To bring us sug-ar and tea and rum.



14

(mel. in alto)



One day, when the tong-uin' is done, We'll take our leave and go.



18

Verse 2



mf She had not been two weeks from shore When down on her a right whale bore. The



capt - ain called all hands and swore He'd take that whale in tow.

Sing Chorus

27 Verse 3



mf Be - fore the boat had hit the wat - er The whale's tail came up and caught her. All

32



hands to the side, har - poned and fought her When she dived down be - low.

Sing Chorus

36 Verse 4



mf No line was cut, no whale was freed; The Cap-tain's mind was not of greed, But

41



he be-longed to the whale-man's creed; She took the ship in tow.

Sing Chorus

45 Verse 5 *p*



For for-ty days, or e-ven more, The line went slack, then tight once more. All

50



boats were lost (there were on - ly four) But still the whale did go.

Sing Chorus

54 Verse 6



As far as I've heard, the fight's still on; The line's not cut and the whale's not gone. The

59



Wel-ler-man makes his re-gu-lar call To Cap - tain, crew, and all.

Sing final Chorus

Optional descant for last two choruses



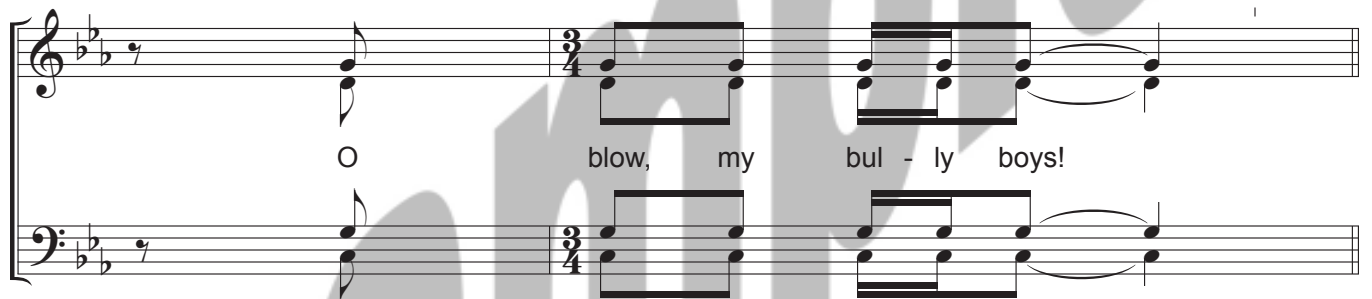
f Soon may the Wel-ler-man come To bring us sug-ar and tea and rum.



One day, when the tong-uin' is done We'll take our leave and go.

next verse starts here

Optional soli (or instrumental) interlude between chorus and verse



O blow, my bul - ly boys!

Optional ways of elaborating the arrangement:

Give each verse to a different soloist or section

Double the vocal lines with instruments

Add body percussion (claps / stamps / patschen)

Add the off-kilter 3/4 interlude above after selected choruses (but have some people ready to bring in the next verse)

Add an instrumental (or whistled) chorus immediately after a sung chorus

And so on!